



An ISO 9001: 2015 Certified Company

**Manufacturer of Sugar
Mills and Mill Spares**



About Us

Kolhapur Auto Works Pvt Ltd , Part of the KAW Group has conceived its business operations since 1962 and is a world leader as a manufacturer, supplier and exporter with a wide product range for industries in Sugar , & later diversified to Cement & Mining as well . Our products are manufactured in our State of the Art Machine shop and Foundry spread across 60,000 sq feet in order to deliver the best to our customers at a reasonable price. Our products & services are acknowledged for their optimum quality , Durability & reliability .



Vision & Mission

Revolutionising the manufacturing industry through innovation, precision, and excellence.
We aspire to be a global leader in delivering cutting-edge manufacturing solutions



Our Vision

Guided by a relentless focus on, Quality, Technology & Automation

Our Mission

K - Knowledge Based Manufacturing
A - Accelerated Deliveries
W - Workmanship Strengthening
P - Product Diversification
L - Life time value of customers

Industries We Supply

We take pride in being a trusted supplier to a diverse range of industries. Our cutting-edge manufacturing solutions cater to the unique needs and challenges of these sectors.



Sugar

We are a trusted name in the sugar manufacturing industry for quality and precision.



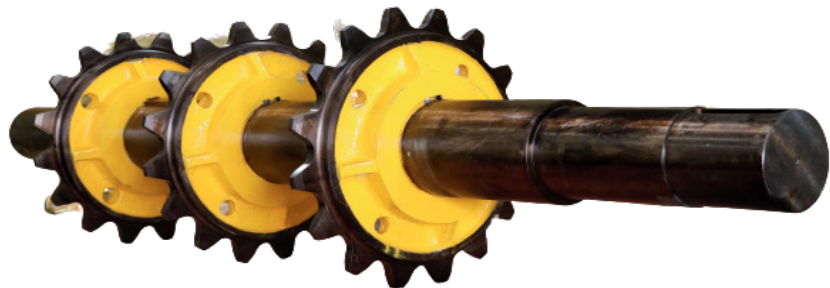
Cement

With our deep understanding of the industry's unique requirements we provide reliable components



Mining

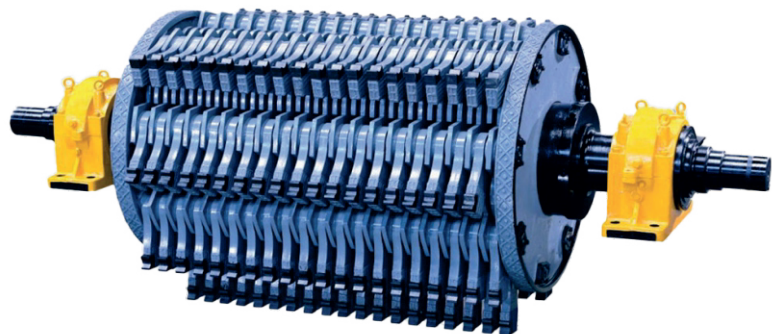
We provide reliable and robust components that contribute to the safe and efficient mining operations.



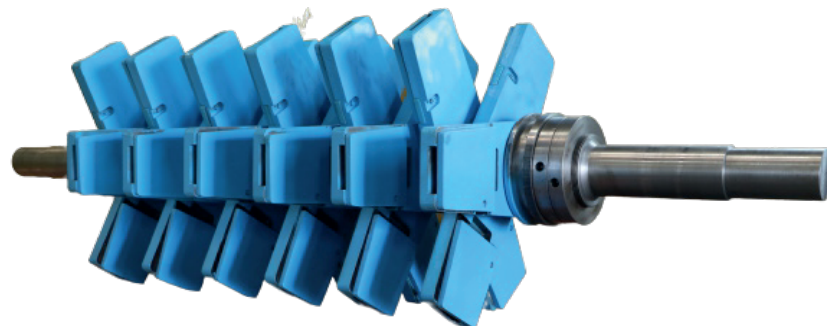
CANE CARRIER DRIVE SHAFT



TRPF ROLLER



FIBRIZOR OR SHREDDER



CANE CHOPPER ASSEMBLY

MILL HEAD STOCK



MILL ASSEMBLY

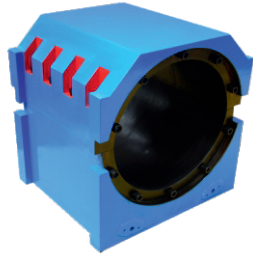


Our Products

Mill Spares



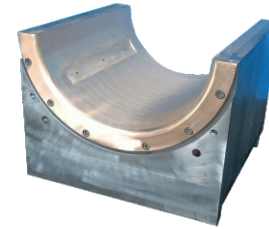
C.I. ROLLER SHELL



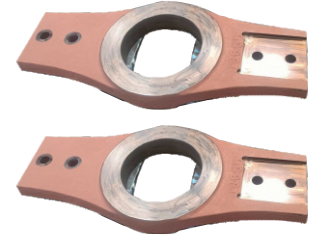
C.S. BEARING HOUSING TOP & BOTTOM HALF



C.S. BOTTOM BEARING HOUSING WITH GUN METAL LINER



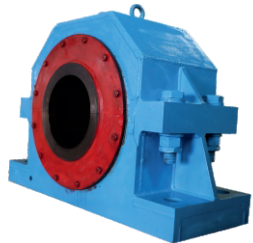
C.S. TOP BEARING HOUSING WITH GUN METAL LINER



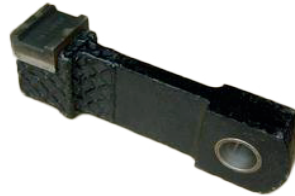
CANE CUTTER HUB



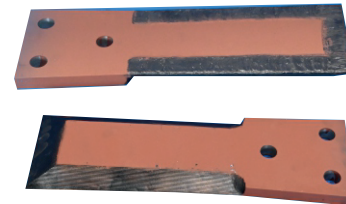
C.S. SCRAPER PLATE



FABERIZER PEDESTAL BEARING HOUSING



HAMMER



KNIFE

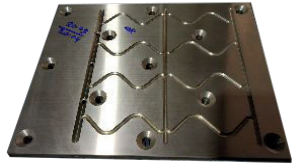


RAKE

Mill Spares



Bronze Products



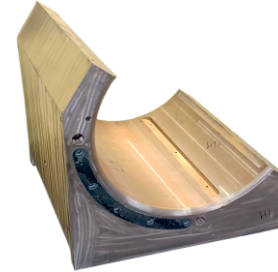
GUN METAL WEAR PLATE



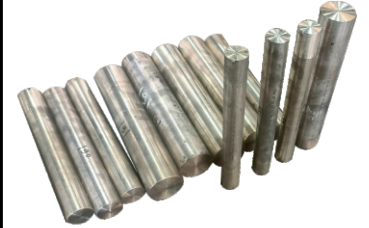
GUN METAL BEARING LINER



GUN METAL BEARING HOUSING



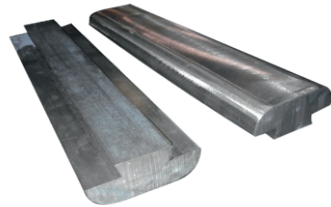
**GUN METAL BOTTOM
ROLLER BEARING**



GUN METAL ROUND BAR



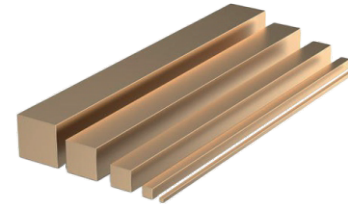
GUN METAL BUSH



WEDGE



SAMPLING COCK



GUN METAL SQUARE BAR



GUN METAL FLAT

Chains & Slats



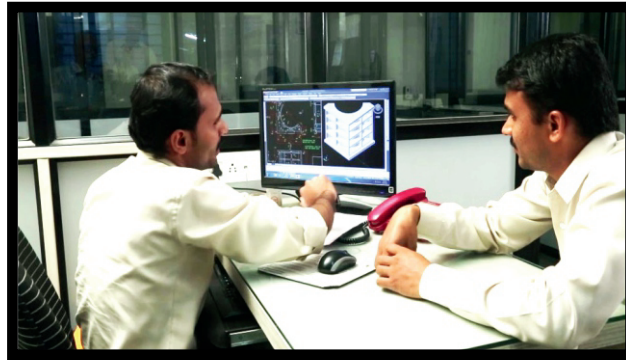
Our Infrastructure

Machine Shop Divison

KAWPL as an impressive infrastructure spanning over 70,000 sq feet in MIDC Kolhapur, Maharashtra. Equipped with a state of the art machine shop, Alloy-Non Alloy Foundry and equipment capable of handling all types of heavy and precision work required by the Industry and clients.



State of the Art Machine Shop



Machine shop - With the state of the art Machine shop and having variety of machines such as heavy duty lathe, VMC's, CNC Bed Milling, SPM, Horizontal Boring Machine, Plano Miller, VTL Machines, many more making the Factory capable of delivering top quality precision products to the customers in India and Globally.

Foundy Divison



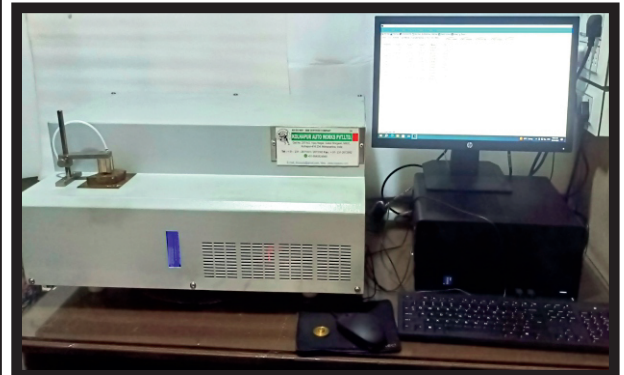
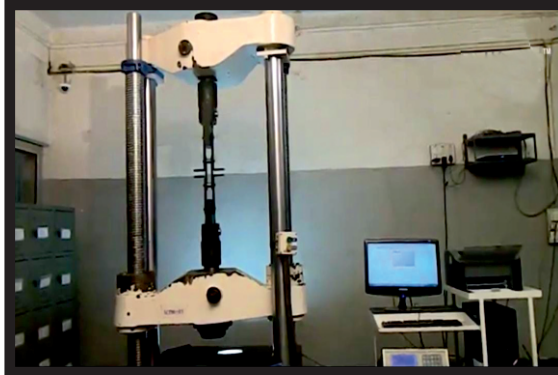
**Perfection
& Excellence**



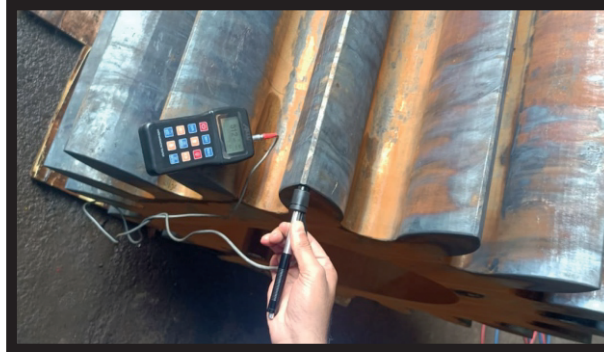
Foundry - KAWPL also has an in-house Alloy and Non Alloy foundry which are also supported with state of the art testing facility thus ensuring all of the castings are as per industry standards.



Testing Facility



**Achieving
Sustainable
Quality**



We understand the critical importance of quality assurance and precision in the manufacturing process. That's why we have invested in a state-of-the-art testing facility to ensure that our products meet the highest industry standards across the sugar, cement, and mining sectors. Our testing facility is equipped with cutting-edge technology and staffed by highly skilled professionals, enabling us to deliver products of exceptional quality and reliability.

Our Quality & Certification

Our Quality Policy is defined & strongly driven by the following management principles & behaviours : Build a mutually profitable relationship with our customers, ensuring their long-term success, through the understanding of their needs and requirements. Achieve our commitments for quality, cost, & schedule Enhance the systematic research and use of best preventive practices at all levels & ensure reliable risk management

Drive continual improvement & innovation based upon efficient business processes, well-defined measurements, best practices, state of the art machines & customer surveys. Develop staff competencies, creativity, empowerment & accountability through appropriate development programs & show strong management involvement and commitment

Kolhapur Auto Works Pvt Ltd strives to be the best manufacturer & exporter in the industry. Through the use of these guiding principles, everyone in the company is accountable for fully satisfying our customers by meeting or exceeding their needs and expectations with best-in-class manufacturing processes and services. Our goal is 100% customer satisfaction 100% of the time.



Contact Us :

We value open communication and strong partnerships with our clients in the Sugar, Cement, and Mining Industries


KOLHAPUR AUTO WORKS PVT. LTD

Manufacturers & Exporters of Alloy & Non Alloy Castings & Spares To The Sugar, Cement & Mining Industries.

 admin@kopauto.com

 +91 85509 96159

 Gat No. 287/A/2, Vijaynagar Gokul
Shirgaon MIDC, Kolhapur - 416234 (MH) India.

 www.kawgroupindia.com

